

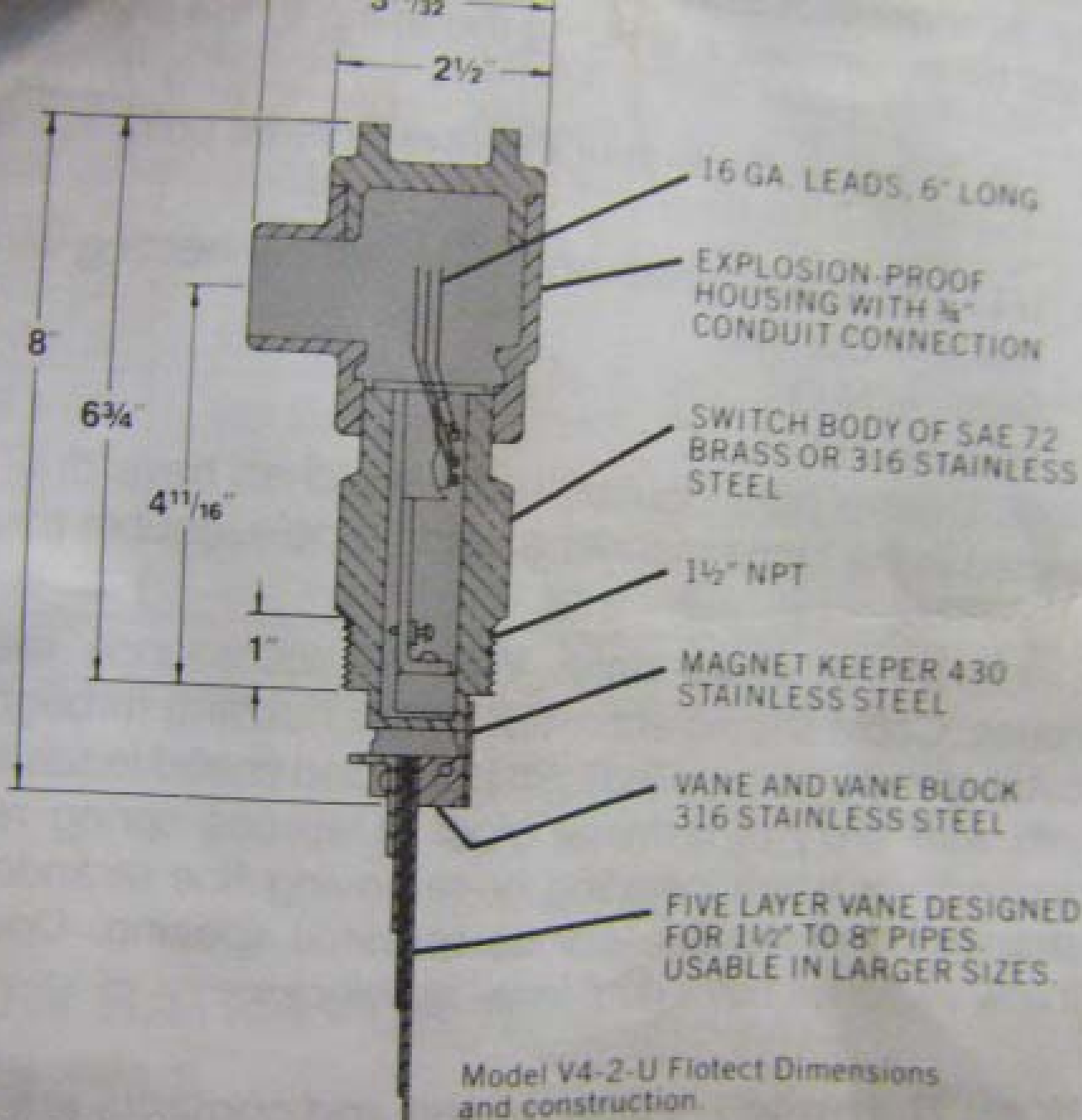


4641LT498



4641LT498_1

 LISTED 350 G
FLOTECT®
FLOW SWITCH FOR HAZARDOUS
 CLASS I, GROUPS C & D - CLASS II, GROUPS A, B & C
 FM, U.L. 10 AMPS - 125 / 250 VAC, C.S.A. 5 AMPS
 FM, C.S.A. 5 AMPS RESISTIVE, 3 AMPS INDUCTIVE
 BLACK - COM. BLUE - N.O. RED - A.Y.
 MDL: **V4-SS-2-D-U** SN: **A270**
CAUTION - To Prevent Ignition of Hazardous Atmospheres
 Supply Before Opening. Keep Cover Tightly Closed.
WARNING - There May Be More Than One Live Circuit
 Energized. Garder Le Couvercle Bien Fermé Lorsque Le
 Tension. Avertissement - Plus D'un Circuit Sous Tension.
W. E. ANDERSON A DIV. OF DWYER INSTRUMENTS
 MICHIGAN CITY, INDIANA 46360, U.S.A.
 CE TAG NO: [REDACTED] MWP: **13790**



Model V4-2-U Flotect Dimensions and construction.

...now is interrupted. Shuts down burner when air flow
Stops machines if cooling or flow ceases.

SPECIFICATIONS

Temperature limits:

Standard 275°F (135°C). High temperature option (not U.L., C.S.A. or CENELEC), 400°F (205°C) max.
Brass:

316S.S. 1000psig (69bar)

Ratings to 5000psig(345bar) available

(SPDT only).

Electrical Rating:

U.L. and CENELEC: 10A @ 125/250 Vac
C.S.A.: 5A @ 125/250 Vac, 5A resistive 3A inductive @ 30Vdc

Optional ratings (not U.L., CSA or CENELEC): MV option; Gold contacts.

1.0A @ 125 Vac MT option: 400°F (205°C),

5A @ 125/250Vac

Wiring:

U.L./C.S.A. unit, 16 gauge copper wire, 6" long, mechanically and solder bonded to switch.

Switch body:

CENELEC unit: Terminal board.
One piece milled and bored Brass or 316 SS. Other materials on request.

Valve:

316 SS 1 1/8" (40mm) wide. Std. trim includes 430 SS and silver solder. Other materials on request.

Piping Connection:

1 1/2" NPT std for mounting in 1 1/2" threaded. For other mounting see back page. Threadlet fittings available.

Installation:

Within 5" of vertical for proper operation. Units for horizontal installation (vertical pipes) on request.
4lb. 5oz. (1.96Kg)

Weight:

Options:

All 316SS wetted parts. Teflon coated wetted parts. DPDT circuits. Cartridge heater to melt paraffin, etc. Time delay relay.

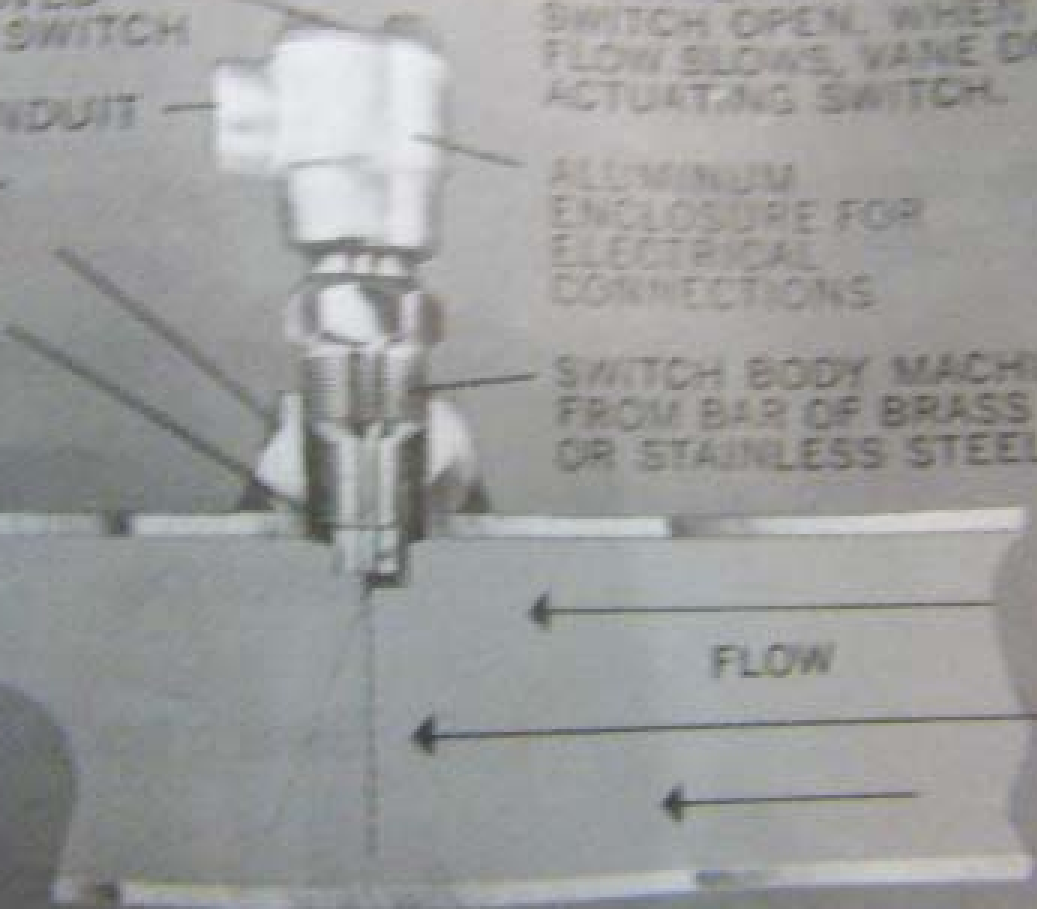
Explosion-proof and listed with U.L. and C.S.A. for Class I, Groups C and D, Class II, Groups E, F, and G or are flame-proof to CENELEC EExd IIB T6.

THREADED COVER IS EASILY REMOVED FOR ACCESS TO SWITCH
3/4" NPT FOR CONDUIT
1/2" THREDOLET
CUT 1 3/4" MIN. HOLE IN PIPE

REQUIRED FLOW HOLDS SWITCH OPEN, WHEN FLOW SLOWS, VANE DROPS, ACTUATING SWITCH.

ALUMINUM ENCLOSURE FOR ELECTRICAL CONNECTIONS

SWITCH BODY MACHINED FROM BAR OF BRASS OR STAINLESS STEEL



4641LT498_5

Thredolet installation. May also be installed using tee.

...ing vane attracts a magnet within the solid metal switch body above, actuating a snap switch by means of a simple lever arm.

Features include: Simplicity of design and a leak-proof switch body, machined from bar stock for pressures to 2000 psig, (138 bar), it eliminates the possibility of process fluid entering the switch compartment. The threaded conduit enclosure cover permits easy inspection or replacement of electrical assembly without shutting down the process, or removing electrical conduit. Power must be disconnected. The unit fits directly into pipeline with tee, thredolet or flange for easy installation. Pendulum-like vane action responds accurately to fluid flow rate. The custom vane or multi-layer vane is sensitive to low velocity flows, yet it is rugged enough to withstand high flow surges. If desired, a delay timer can be wired into the installation. All units are explosion-proof and listed with U.L. and C.S.A. for Class I, Groups C and D, Class II, Groups E, F, and G or are flame-proof to CENELEC EExd IIB T6.

and flowing so.
Supplied with custom or universal multi-layer vanes for field installation in pipes from 1 1/2".

4641LT498_7

Compact and reliable, the Flotect V4 Flow switch operates automatically to protect equipment and pipeline systems against damage from reduction or loss of flow. Installed in thousands of pipelines and processing plants around the world, this unique magnetically actuated switching design gives superior performance. Universal multi-layer vane accommodates pipe sizes from 1 1/2" up. Custom vanes are available with factory calibration. There are no bellows, springs, or seals to fail. Instead, the free-swinging vane attracts a magnet within the solid metal switch body above, actuating a snap switch by means of a simple lever arm.

Features include: Simplicity of design and a leak-proof switch body, machined from bar stock for pressures to 2000 psig, (138 bar), it eliminates the

